

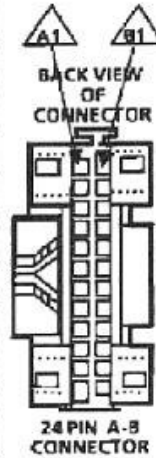
TBI FUEL INJECTION ECM CONNECTOR IDENTIFICATION

This ECM voltage chart is for use with a digital voltmeter to further aid in diagnosis. The voltages you get may vary due to low battery charge or other reasons, but they should be very close.

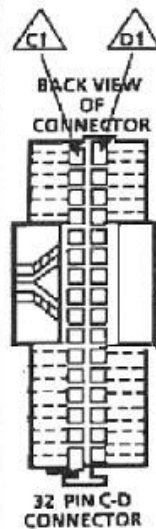
THE FOLLOWING CONDITIONS MUST BE MET BEFORE TESTING:

- Engine at operating temperature
- Engine idling (for "Engine Run" column)
- Diagnostic terminal not grounded
- ALDL tool not installed

VOLTAGE				
KEY "ON"	ENG. RUN	CIRCUIT	PIN	WIRE COLOR
④	14	FUEL PUMP RELAY	A1	DK GRN/ WHT
		NOT USED	A2	
		NOT USED	A3	
12	14	EGR CONTROL	A4	GRY
		"SERVICE ENGINE SOON" CONTROL	A5	BRN/ WHT
⑦	14	IGN - ECM FUSE	A6	PNK/ BLK
		SHIFT LIGHT OR TCC CONTROL	A7	TAN/ BLK
2-5	2.5	SERIAL DATA	A8	ORN
		DIAG. TERM.	A9	WHT/ BLK
①	①	SPEED SENSOR SIGNAL	A10	BRN
⑧	0	SENSOR GROUND	A11	PPL OR BLK
0	0	SYSTEM GROUND	A12	BLK/ WHT



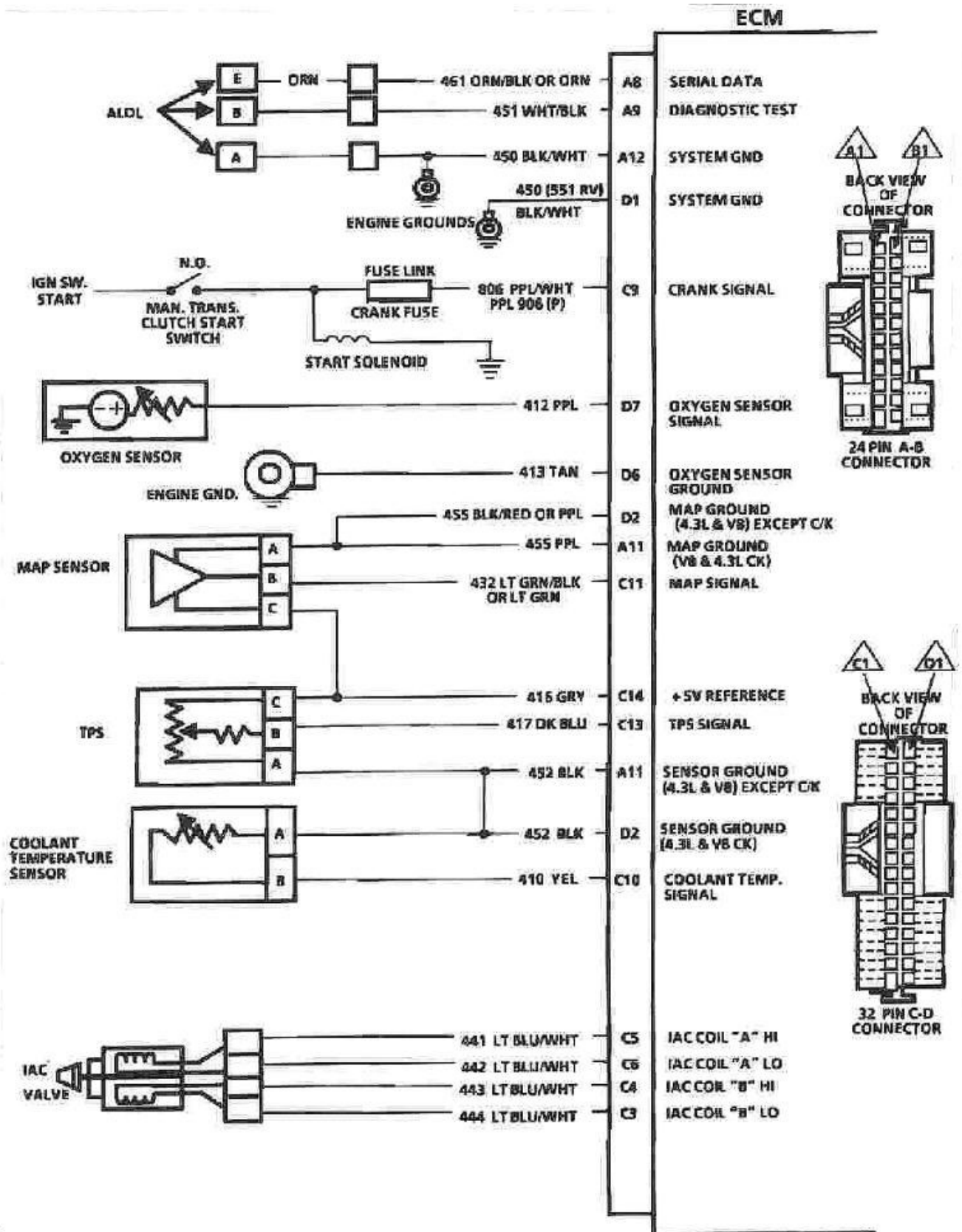
		NOT USED	C1	
12	14	FAC SOL	C2	BRN
NOT USEABLE		IAC "B" LO	C3	LT GRN/ BLK
NOT USEABLE		IAC "B" HI	C4	LT GRN/ WHT
NOT USEABLE		IAC "A" HI	C5	LT BLU/ WHT
NOT USEABLE		IAC "A" LO	C6	LT BLU/ BLK
12	14	HIGEAR SWITCH	C7	LT BLU
		NOT USED	C8	
0	0	CRANK SIGNAL	C9	PPL/WHT
②	1.9	COOLANT TEMP. SIGNAL	C10	YEL
4.9	2.0	MAP SIGNAL	C11	LT GRN
		NOT USED	C12	
⑤	.6V	TPS SIGNAL	C13	DK BLU
5	5	5 VOLT REFERENCE	C14	GRY
		NOT USED	C15	
12	14	BATTERY 12 VOLTS	C16	ORN

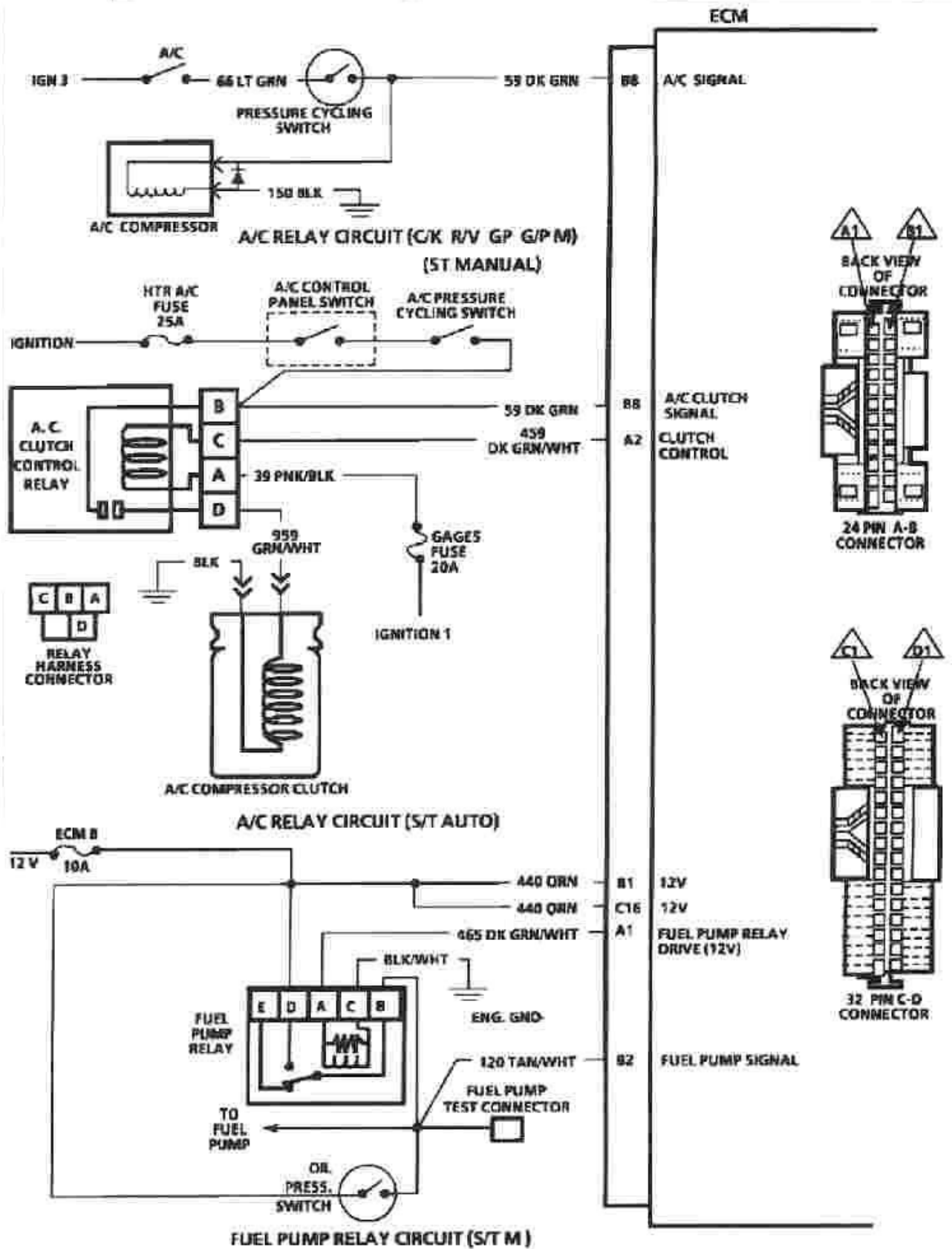


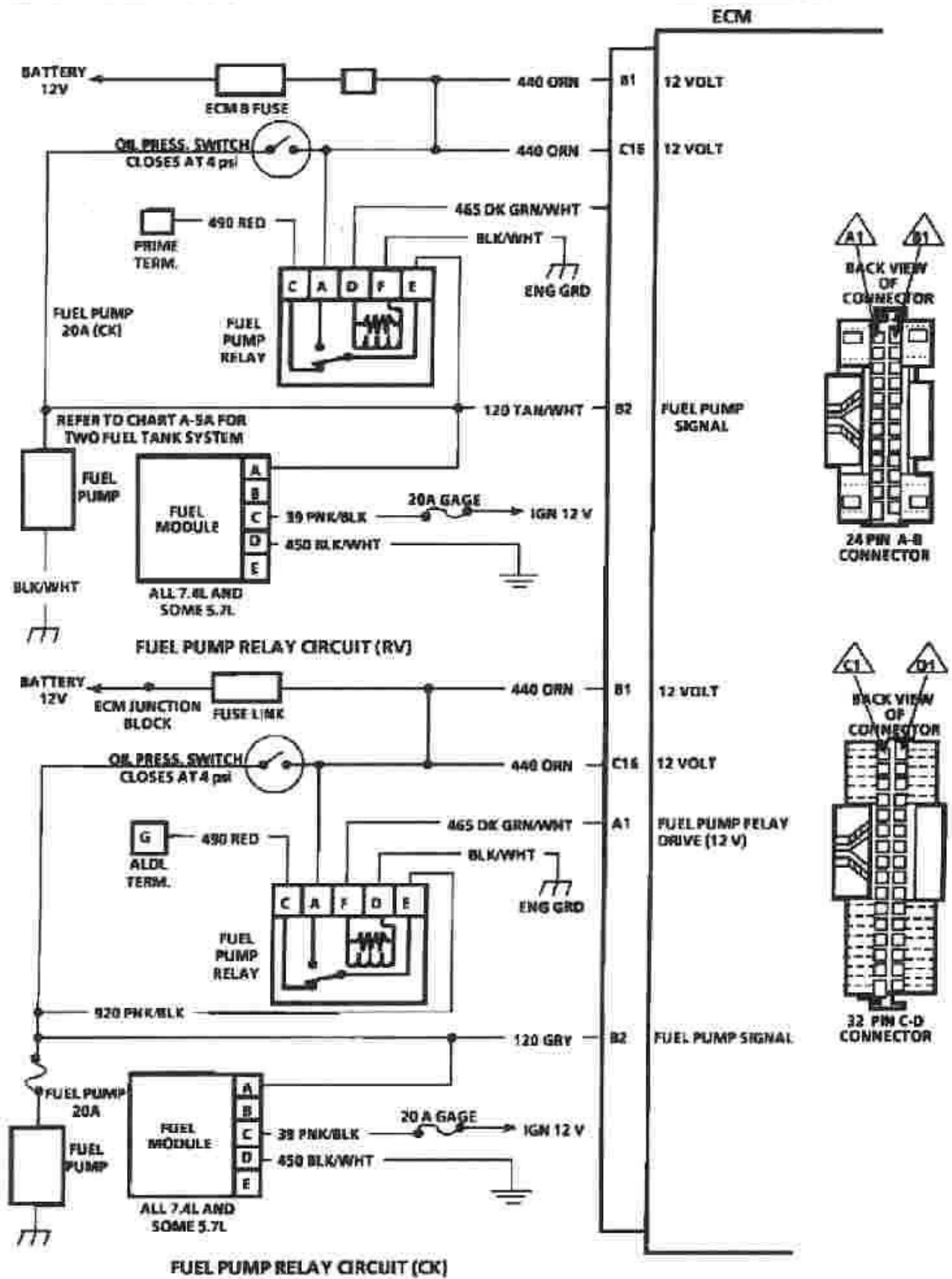
VOLTAGE				
WIRE COLOR	PIN	CIRCUIT	KEY "ON"	ENG. RUN
ORN	B1	BATT. 12 VOLTS	12	14
TAN/ WHT	B2	FUEL PUMP SIGNAL	0	14
BLK/ RED	B3	EST REFLOW	0	0
	B4	NOT USED		
PPL/ WHT	B5	EST REFERENCE HI	0	1.5
	B6	NOT USED		
BLK	B7	ESC SIGNAL	9	9
DK GRN	B8	A/C SIGNAL	0	0
	B9	NOT USED		
ORN/ BLK	B10	PARK/NEUTRAL SW SIGNAL	0	0
	B11	NOT USED		
	B12			

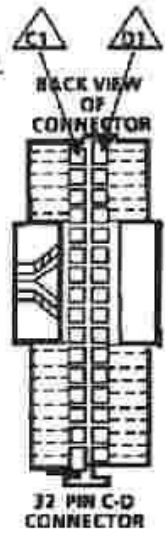
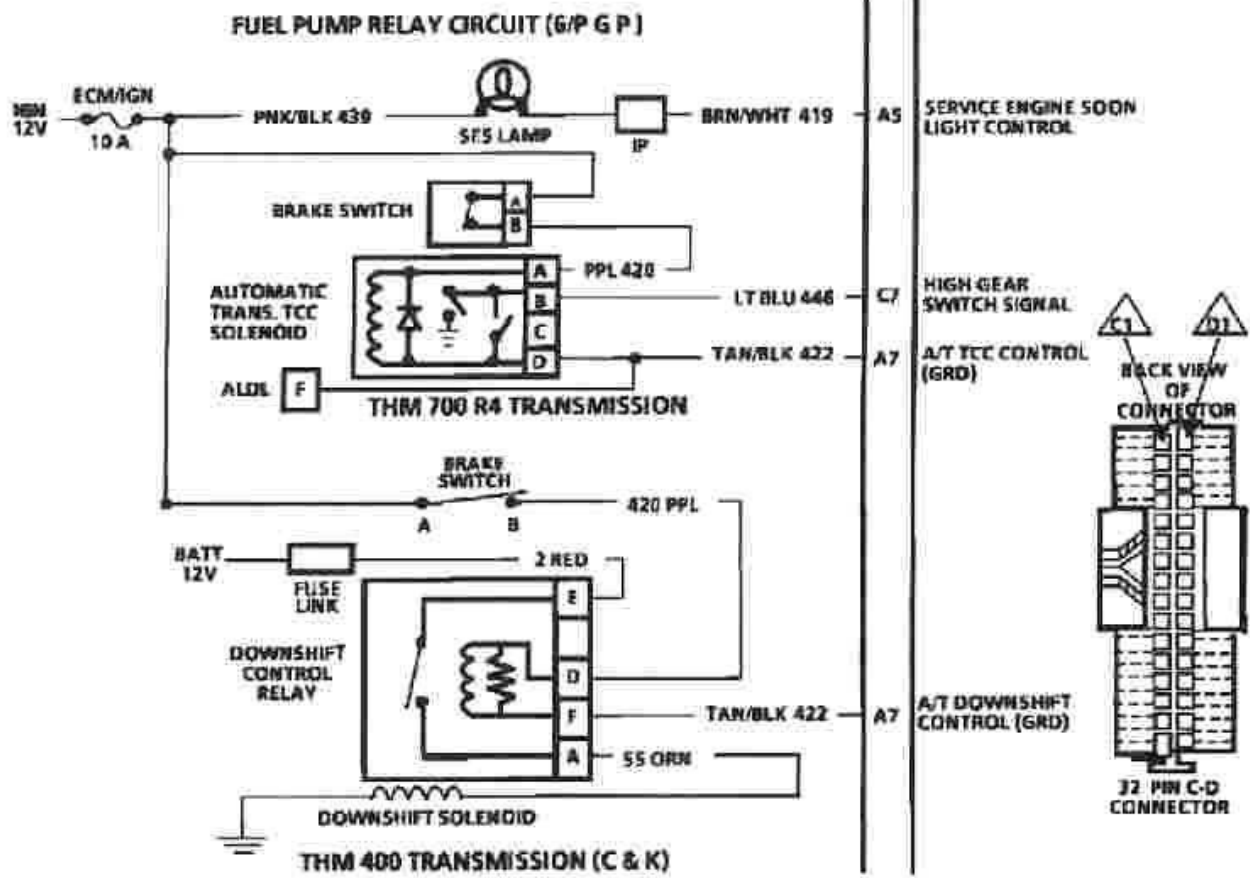
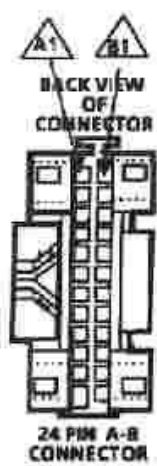
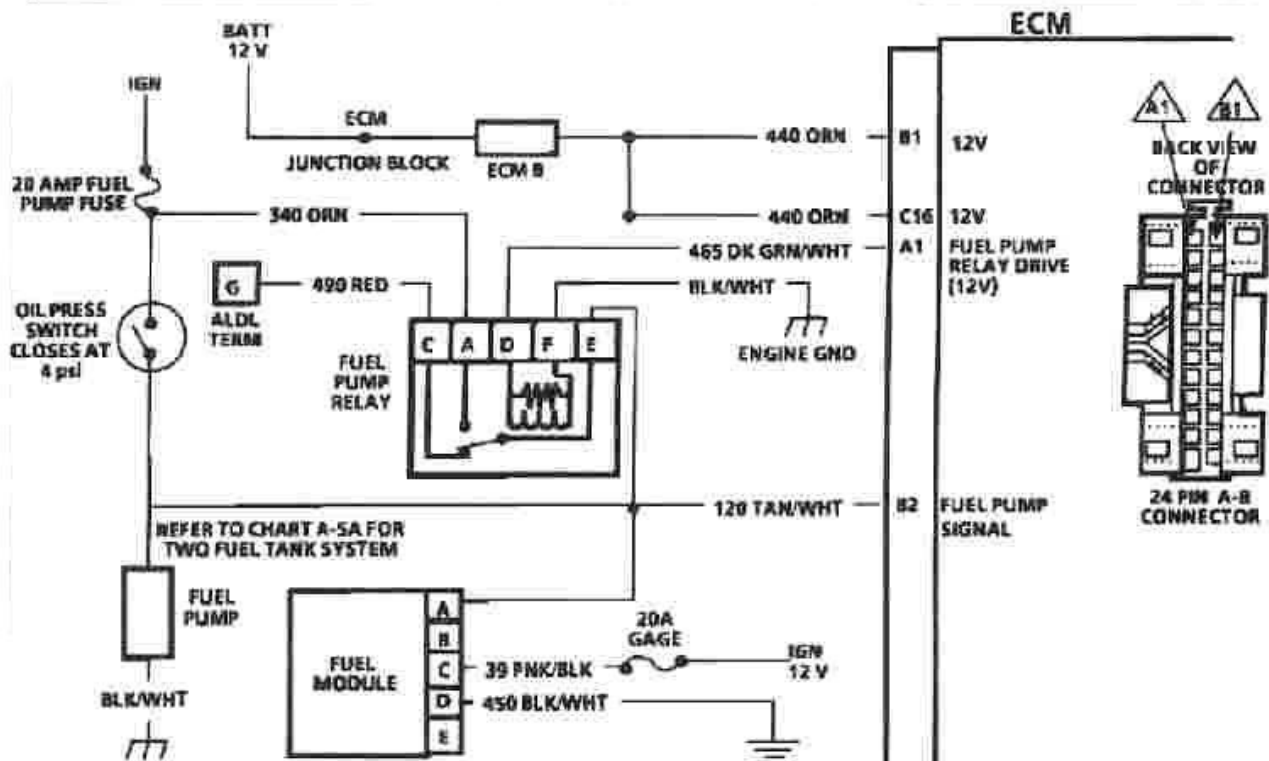
BLK/ WHT	D1	SYSTEM GROUND	0	0
BLK/RED PPL/BLK	D2	SENSOR GROUND	0	0
	D3	NOT USED		
WHT	D4	EST CONTROL	0	1.0
TAN/ BLK	D5	EST BYPASS	0	4.75
TAN	D6	GND (O ₂)	0	0
PPL	D7	O ₂ SENSOR SIGNAL	0	③
	D8	NOT USED		
	D9	NOT USED		
	D10	NOT USED		
	D11	NOT USED		
	D12	NOT USED		
	D13	NOT USED		
LT GRN	D14	INJECTOR B	12	14
	D15	NOT USED		
BLU	D16	INJECTOR A	12	14

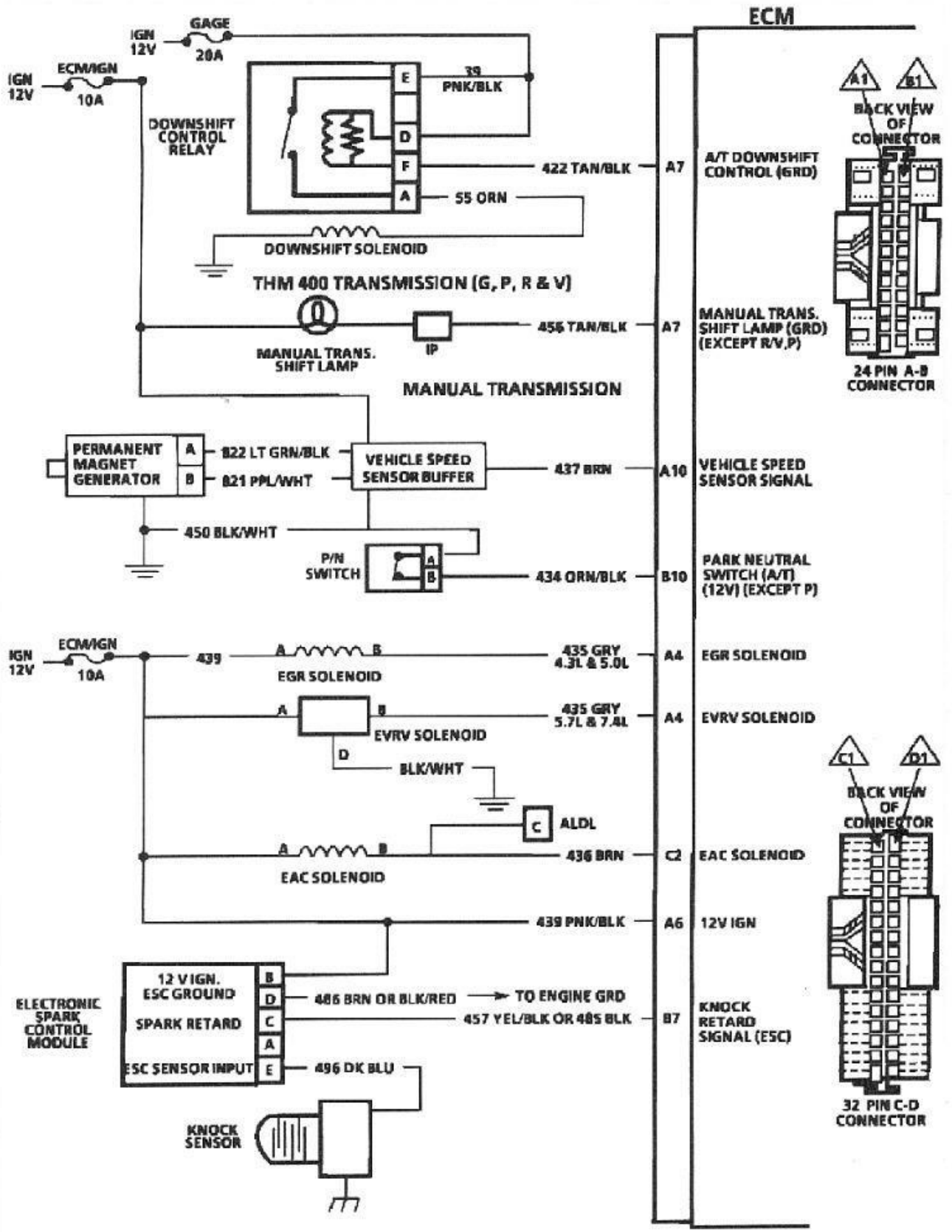
- 1 Varies from .60 to battery voltage depending on position of drive wheels.
- 2 Varies with temperature.
- 3 Varies.
- 4 12v First two seconds on 4.3L & 5.0L (12v first 20 seconds on 5.7L & 7.4L).
- 5 Measured between terminals C13 and A11 (± .05V).
- 6 Used on 4.3L, 5.0L or 5.7L engine. Wire color may also be yel/black or yellow/red.
- 7 Also downshift control on THM 400.
- 8 Refer to wiring diagram for terminals A11 or D2 sensor ground.











ECM

